

# **maldita luna**

para percusión y electroacústica

**luis jure**

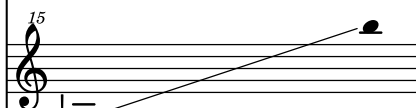
**instrumental:**  
**instrumentation:**

seis crócalos  
*six crotales*



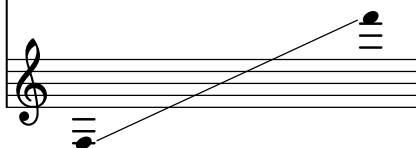
sonando dos octavas más agudas  
*sounding two octaves higher*

glockenspiel  
*glockenspiel*



sonando dos octavas más agudas  
*sounding two octaves higher*

vibráfono  
*vibraphone*



esta obra fue compuesta por encargo de ricardo gómez,  
gracias a un proyecto financiado por el **fonam**, fondo nacional de la música, uruguay  
*this piece was commissioned by ricardo gómez, with funds provided by **fonam**, uruguay*

**maldita luna** está dedicada a ricardo gómez  
**maldita luna** *is dedicated to ricardo gómez*



© 2002 luis jure

# maldita luna

para percusión y electroacústica

luis jure

*15* crócalos [15ª]

*ppp*

*15* glockenspiel [15ª]

vibráfono

♩ = 1 segundo

0:00 0:05 0:10 0:15

*15*

*15*

*p*

0:20 0:25 0:30 0:35

15  
15  
*mp*  
0:40 0:45 0:50 0:55

This system of a musical score features two staves. The upper staff contains a melodic line with a long, sweeping slur over the first two measures. The lower staff provides a harmonic accompaniment with various rhythmic patterns and accidentals. A dynamic marking of *mp* is placed below the lower staff. A timeline at the bottom of the system shows time markers at 0:40, 0:45, 0:50, and 0:55.

15  
15  
1:00 1:05 1:10 1:15

This system continues the musical piece with two staves. The upper staff has a melodic line with several slurs and ties. The lower staff continues the accompaniment. The dynamic marking *mp* is not explicitly repeated in this system. A timeline at the bottom shows time markers at 1:00, 1:05, 1:10, and 1:15.

15  
15  
*poco crescendo*  
*mf*  
1:20 1:25 1:30 1:35

This system concludes the musical piece with two staves. The upper staff features a melodic line with a long slur. The lower staff has a more active accompaniment. The dynamic marking *poco crescendo* is placed below the lower staff, and *mf* is placed below the final measure. A timeline at the bottom shows time markers at 1:20, 1:25, 1:30, and 1:35.

15

*poco crescendo* *mf* *poco crescendo*

1:40 1:45 1:50 1:55

15

*f*

2:00 2:05 2:10 2:15

15

2:20 2:25 2:30 2:35

15

2:40 2:45 2:50 2:55

This system contains measures 15 through 24. It features a complex rhythmic pattern with frequent sixteenth-note runs. Each measure is bracketed with a '5', indicating a five-finger fingering. The notation includes various accidentals (sharps, flats, naturals) and dynamic markings such as accents (>) and hairpins. The time signature is 4/4. A tempo or performance instruction is partially visible at the bottom right of the system.

15

3:00 3:05 3:10 3:15

This system contains measures 25 through 34. It continues the rhythmic complexity with sixteenth-note patterns and includes some longer note values. The '5' fingering brackets are present throughout. The notation includes accents and dynamic markings. The time signature is 4/4.

15

3:20 3:25 3:30 3:35

This system contains measures 35 through 44. It features a mix of sixteenth-note runs and longer note values. The '5' fingering brackets are used for the sixteenth-note passages. A triplet of eighth notes is marked with a '3' and the dynamic *mp* (mezzo-piano). The system concludes with a final chord. The time signature is 4/4.

15

3:40 3:45 3:50 2:55

15

4:00 4:05 4:10 4:15

15

4:20 4:25 4:30 4:35

15

4:40 4:45 4:50 4:55

*p*

15

5:00 5:05 5:10 5:15

*pp*

15

5:20 5:25 5:30 5:35

*pp*



15

15

*ppp*

5:40 5:45 5:50 5:55

15

15

6:00 6:05 6:10 6:15

15

15

6:20 6:25 6:30 6:35